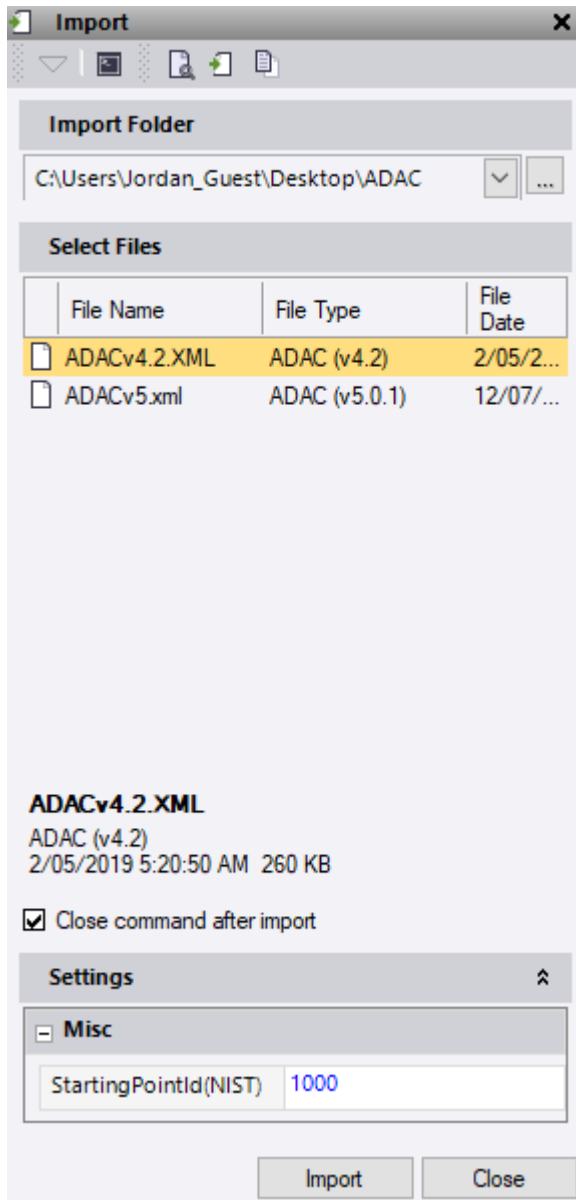


Description

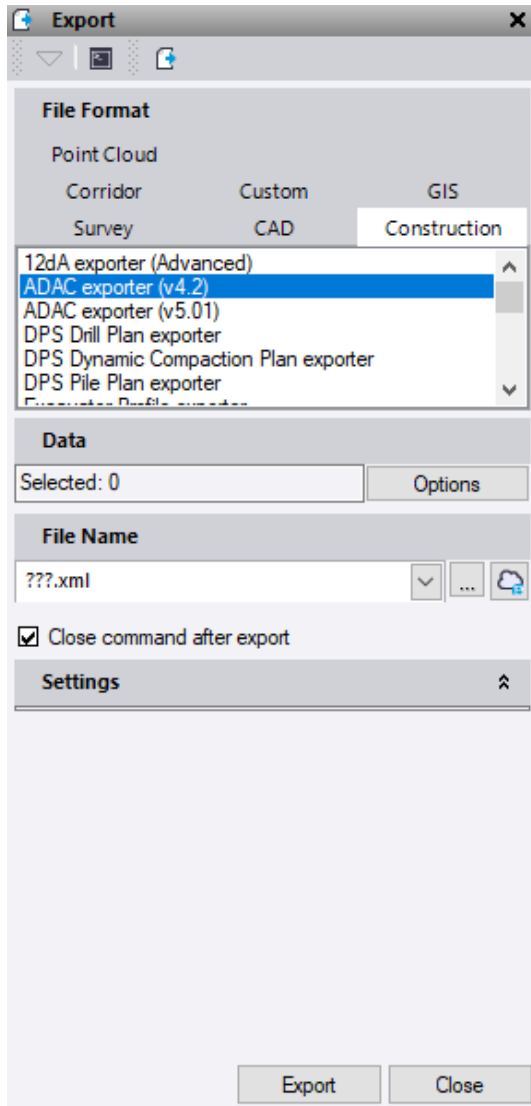
ADAC (Asset Design as Constructed) is a non-proprietary data specification and transport format (XML) for the description and transmission of asset design and as constructed data. This Import/Export command enables the use of this data format within TBC and support both Version 4.2 and 5.01.

Import ADAC xml



1. Do either of the following
 - Drag and drop the file onto a plan view
 - Select **Import** in Home Ribbon
2. Browse to **Import Folder** and select file (Both ADAC v5 and v4.2 files can be imported)
3. In the **Settings** you can adjust the starting point ID if required.

Export ADAC xml



Process:

4. Select **Export** in **Home** Ribbon.
5. Click the **Construction** tab.
6. Select either the **ADAC Exporter v4.2** or **ADAC Exporter V5.0** in the **File Format** list.
7. Click in the **Selected objects** box and pick the objects that you want to include in the export from a graphic view or click **Options** and choose a selection option in the list.

Click **Export**. The selected data is exported to the file you specified.